

PRIME URBAN NEIGHBORHOOD RETAIL

FOR LEASE > 1,557 SF

ADDRESS

2730 N Killingsworth St, Portland, OR

AVAILABLE SPACE

1,557 SF corner space

RENTAL RATE

\$26.00/SF/YR, NNN

TRAFFIC COUNTS

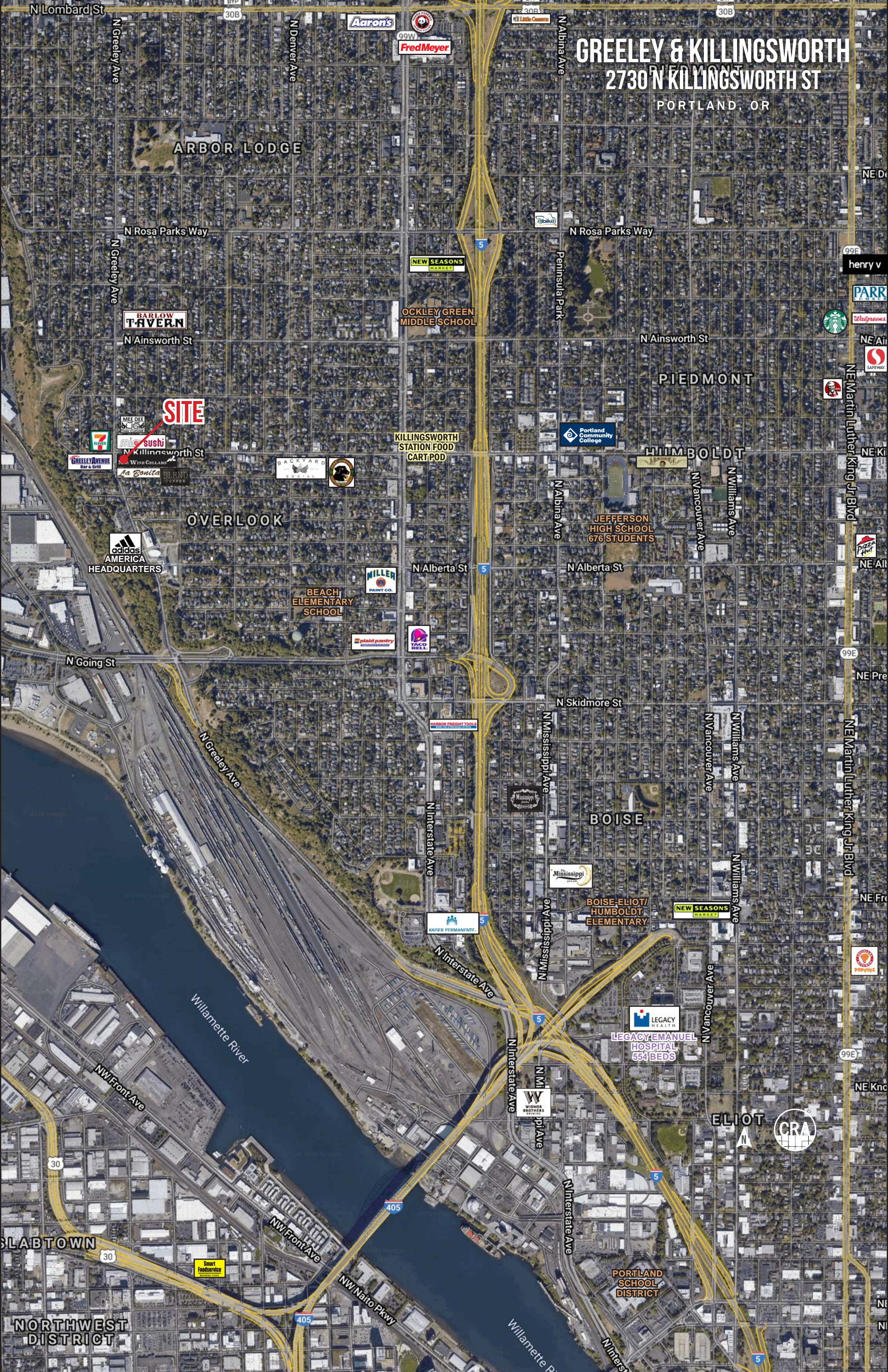
N Killingsworth St – 3,251 ADT ('20)

N Greeley Ave – 13,780 ADT ('20)

HIGHLIGHTS

- Second generation retail/office ground floor space with stunning modern finishes and expansive light filled window lines.
- Located in the heart of the vibrant and growing Overlook North Portland neighborhood. The property features 25 residential apartment units above with ground floor retail spaces fronting N Killingsworth and N Greeley.
- Nearby neighborhood tenants include Mac Wine Cellars, Blend Coffee Lounge, Mee Dee Thai Cuisine, Mio Sushi, and located three blocks from Adidas America headquarters.
- Available now!

GREELEY & KILLINGSWORTH 2730 N KILLINGSWORTH ST PORTLAND, OR



SITE

BARLOW TAVERN

OCKLEY GREEN MIDDLE SCHOOL

KILLINGSWORTH STATION FOOD CART POD

OVERLOOK

adidas AMERICA HEADQUARTERS

BEACH ELEMENTARY SCHOOL

JEFFERSON HIGH SCHOOL 676 STUDENTS

BOISE

BOISE-ELIOT/HUMBOLDT ELEMENTARY

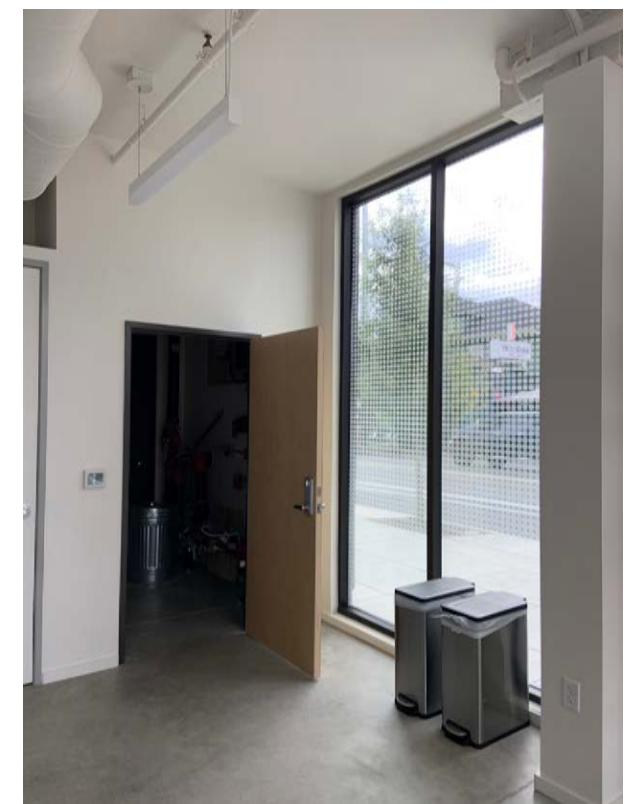
LEGACY EMANUEL HOSPITAL 554 BEDS

ELIOT



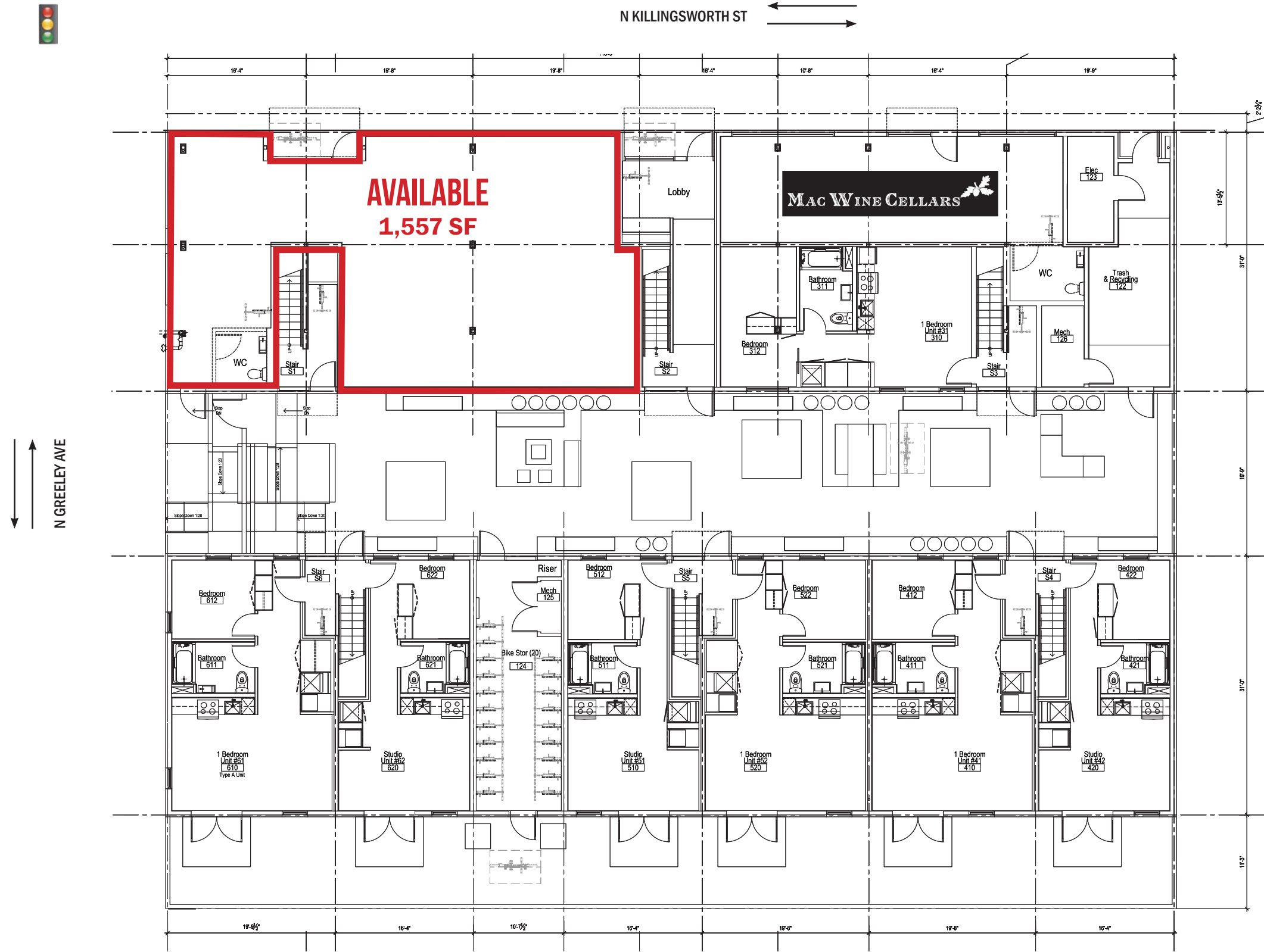
NORTHWEST DISTRICT

PORTLAND SCHOOL DISTRICT



SITE PLAN

GREELEY & KILLINGSWORTH
2730 N KILLINGSWORTH ST
PORTLAND, OR



GREELEY & KILLINGSWORTH

2730 N KILLINGSWORTH ST

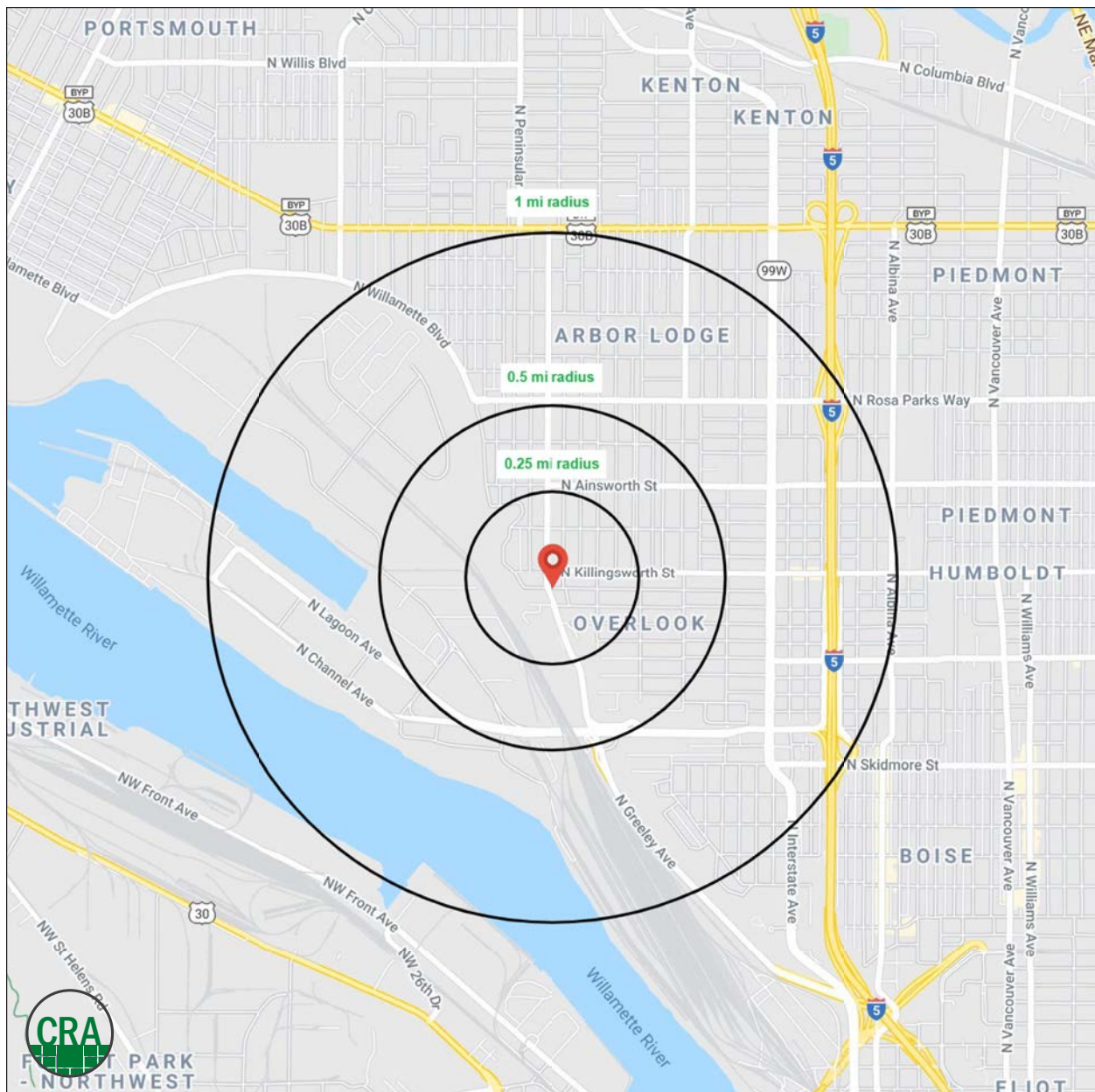
PORTLAND, OR

DEMOGRAPHIC SUMMARY

Source: Regis - SitesUSA (2020)	¼ MILE	½ MILE	1 MILE
Estimated Population 2020	1,304	3,948	14,947
Projected Population 2025	1,311	3,970	15,093
Average HH Income	\$139,934	\$134,190	\$105,911
Median Home Value	\$457,962	\$457,950	\$451,312
Daytime Demographics 16+	1,217	2,887	15,377
Some College or Higher	86.9%	84.6%	82.5%

\$139,934
Average Household Income
¼ MILE RADIUS

37.4
Median Age
¼ MILE RADIUS



SUMMARY PROFILE

2000-2010 Census, 2020 Estimates with 2025 Projections

Calculated using Weighted Block Centroid from Block Groups



Lat/Lon: 45.5624/-122.6952

RS1

2730 N Killingsworth St		0.25 mi radius	0.5 mi radius	1 mi radius
Portland, OR 97217				
POPULATION	2020 Estimated Population	1,304	3,948	14,947
	2025 Projected Population	1,311	3,970	15,093
	2010 Census Population	1,118	3,688	12,291
	2000 Census Population	1,089	3,577	12,237
	Projected Annual Growth 2020 to 2025	0.1%	0.1%	0.2%
	Historical Annual Growth 2000 to 2020	1.0%	0.5%	1.1%
	2020 Median Age	37.4	37.4	36.4
HOUSEHOLDS	2020 Estimated Households	573	1,716	6,546
	2025 Projected Households	601	1,804	6,892
	2010 Census Households	484	1,580	5,277
	2000 Census Households	463	1,506	4,981
	Projected Annual Growth 2020 to 2025	1.0%	1.0%	1.1%
	Historical Annual Growth 2000 to 2020	1.2%	0.7%	1.6%
RACE AND ETHNICITY	2020 Estimated White	79.8%	79.1%	74.4%
	2020 Estimated Black or African American	5.2%	5.4%	8.9%
	2020 Estimated Asian or Pacific Islander	5.6%	6.2%	6.2%
	2020 Estimated American Indian or Native Alaskan	0.8%	0.8%	0.9%
	2020 Estimated Other Races	8.7%	8.5%	9.7%
	2020 Estimated Hispanic	7.0%	6.9%	8.1%
INCOME	2020 Estimated Average Household Income	\$139,934	\$134,190	\$105,911
	2020 Estimated Median Household Income	\$103,291	\$97,767	\$82,968
	2020 Estimated Per Capita Income	\$61,615	\$58,465	\$46,495
EDUCATION (AGE 25+)	2020 Estimated Elementary (Grade Level 0 to 8)	0.9%	1.6%	2.7%
	2020 Estimated Some High School (Grade Level 9 to 11)	1.3%	2.1%	2.6%
	2020 Estimated High School Graduate	10.9%	11.7%	12.2%
	2020 Estimated Some College	15.5%	17.1%	19.8%
	2020 Estimated Associates Degree Only	3.8%	3.9%	6.2%
	2020 Estimated Bachelors Degree Only	45.8%	43.6%	38.1%
	2020 Estimated Graduate Degree	21.7%	20.0%	18.5%
BUSINESS	2020 Estimated Total Businesses	58	140	557
	2020 Estimated Total Employees	997	2,123	12,149
	2020 Estimated Employee Population per Business	17.1	15.1	21.8
	2020 Estimated Residential Population per Business	22.4	28.1	26.8

This report was produced using data from private and government sources deemed to be reliable. The information herein is provided without representation or warranty.

For more information, please contact:

ASHLEY HEICHELBECH 503.490.7212 | ashley@cra-nw.com

KATHLEEN HEALY 503.880.3033 | kathleen@cra-nw.com



KNOWLEDGE

RELATIONSHIPS

EXPERIENCE



**COMMERCIAL
REALTY ADVISORS
NORTHWEST LLC**

Licensed brokers in Oregon & Washington

 733 SW Second Avenue, Suite 200 • Portland, Oregon 97204



www.cra-nw.com



503.274.0211

The information herein has been obtained from sources we deem reliable. We do not, however, guarantee its accuracy. All information should be verified prior to purchase/leasing. View the Real Estate Agency Pamphlet by visiting our website, www.cra-nw.com/home/agency-disclosure.html. CRA PRINTS WITH 30% POST-CONSUMER, RECYCLED-CONTENT MATERIAL.